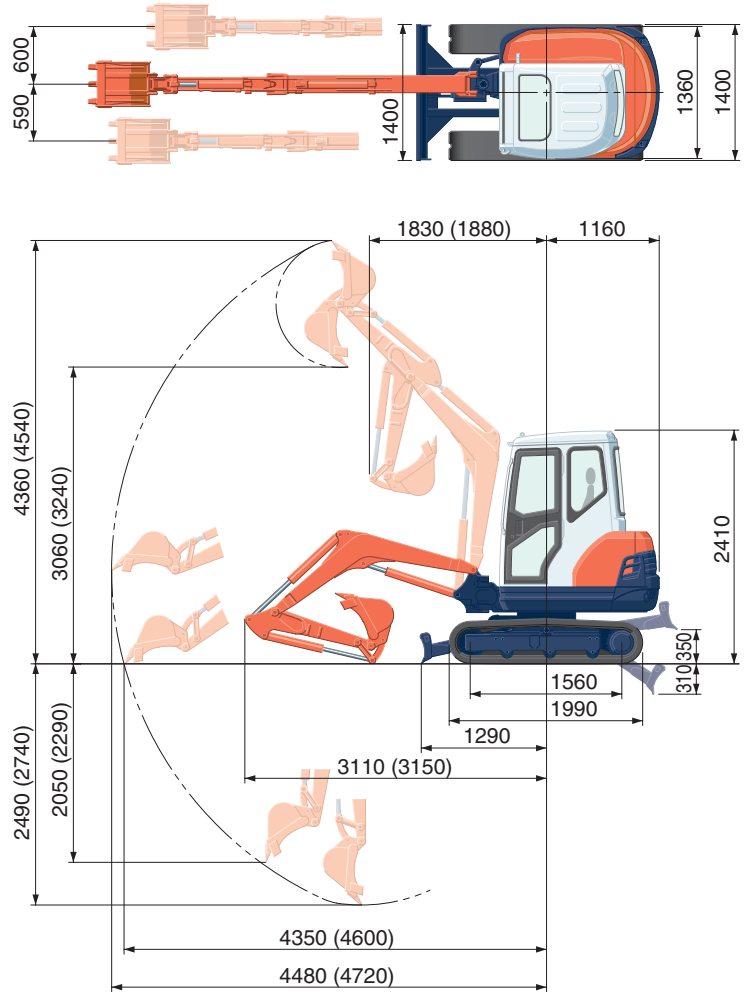


# SPECIFICATIONS

			*Rubber shoe type	
Machine weight	Cabin (Std. arm/Long arm) kg	2590/2600		
	Canopy (Std. arm/Long arm) kg	2485/2495		
Bucket capacity, std. SAE/CECE		m <sup>3</sup>	0.06	
Bucket width	with side teeth	mm	475	
	without side teeth	mm	450	
Engine	Model		V1505-E2-BH-9EU	
	Type		Water-cooled, diesel engine	
	Output ISO9249	PS/rpm	24.8/2100	
		kW/rpm	18.2/2100	
	Number of cylinders		4	
	Bore x stroke		mm	78 x 78.4
Displacement		cc	1498	
Overall length (Std. arm/Long arm)		mm	4270/4310	
Overall height	Cabin	mm	2410	
	Canopy	mm	2430	
Swivelling speed		rpm	9.5	
Rubber shoe width		mm	300	
Tumbler distance		mm	1560	
Dozer size (width x height)		mm	1400 x 300	
Hydraulic pumps	P1,P2		Variable displacement pump	
	Flow rate	ℓ/min	29.4+29.4	
	Hydraulic pressure MPa(kgf/cm <sup>2</sup> )		22.6 (230)	
	P3		Gear pump	
	Flow rate	ℓ/min	16.8	
Hydraulic pressure MPa(kgf/cm <sup>2</sup> )		17.2 (175)		
Max. digging force	Arm (Std./Long) kN (kgf)	14.7/12.4 (1500/1265)		
	Bucket kN (kgf)	21.5 (2190)		
Boom swing angle (left/right)		deg 80/60		
Auxiliary circuit	Flow rate	ℓ/min	46.2	
	Hydraulic pressure MPa(kgf/cm <sup>2</sup> )		17.2 (175)	
Hydraulic reservoir		ℓ	34	
Fuel tank capacity		ℓ	45	
Max. travelling speed	Low	km/h	2.8	
	High	km/h	4.4	
Ground contact pressure	Cabin kPa(kgf/cm <sup>2</sup> )	23.1 (0.236)		
	Canopy kPa(kgf/cm <sup>2</sup> )	22.1 (0.225)		
Ground clearance		mm	305	

# WORKING RANGE



( ): Long Arm  
Unit: mm

# LIFTING CAPACITY

KX61-3(CAB) with standard arm: kN (ton)

Lift Point Height	Lifting point radius (2.5m)			Lifting point radius (3.5m)		
	Over-front		Over-side	Over-front		Over-side
	Blade Down	Blade UP		Blade Down	Blade UP	
2.0m	7.00 (0.71)	7.00 (0.71)	6.81 (0.69)	6.04 (0.62)	5.19 (0.53)	4.12 (0.42)
1.5m	8.65 (0.88)	8.55 (0.87)	6.61 (0.67)	6.38 (0.65)	5.13 (0.52)	4.07 (0.42)
1.0m	10.28 (1.05)	8.30 (0.85)	6.40 (0.65)	6.80 (0.69)	5.06 (0.52)	4.01 (0.41)
0m	11.62 (1.19)	8.10 (0.83)	6.17 (0.63)	7.17 (0.73)	4.97 (0.51)	3.92 (0.40)

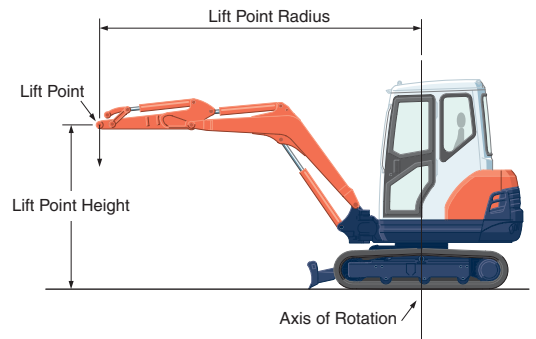
KX61-3(CAB) with long arm: kN (ton)

Lift Point Height	Lifting point radius (2.5m)			Lifting point radius (3.5m)		
	Over-front		Over-side	Over-front		Over-side
	Blade Down	Blade UP		Blade Down	Blade UP	
2.0m	5.95 (0.61)	5.95 (0.61)	5.95 (0.61)	5.46 (0.56)	5.22 (0.53)	4.15 (0.42)
1.5m	7.63 (0.78)	7.63 (0.78)	6.70 (0.68)	5.90 (0.60)	5.15 (0.53)	4.09 (0.42)
1.0m	9.44 (0.96)	8.35 (0.85)	6.45 (0.66)	6.42 (0.65)	5.07 (0.52)	4.01 (0.41)
0m	11.48 (1.17)	8.02 (0.82)	6.14 (0.63)	7.13 (0.73)	4.93 (0.50)	3.88 (0.40)

Please note:

\* The lifting capacities are based on ISO 10567 and do not exceed 75% of the static tilt load of the machine or 87% of the hydraulic lifting capacity of the machine.

\* The excavator bucket, hook, sling and other lifting accessories are not included on this table.



\* Working ranges are with Kubota standard bucket, without quick coupler.

\* Specifications are subject to change without notice for purpose of improvement.